



## MobileMapper Office

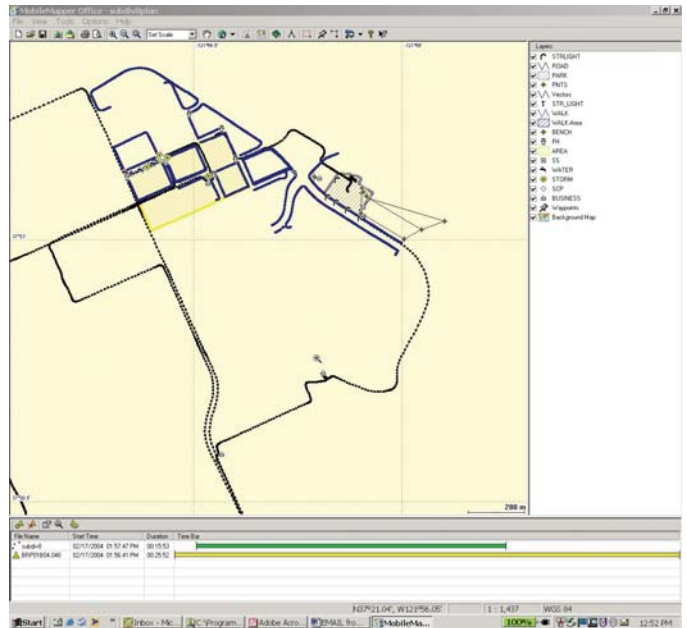
### POST-PROCESSED DIFFERENTIAL CORRECTION FOR SUB-METER ACCURACY

#### INDUSTRIAL STRENGTH MAPPING SOLUTIONS

MobileMapper™ Pro and ProMark™3 are mobile mapping systems combining full GIS data collection and navigation software in handheld GPS receivers. It is backed by MobileMapper Office, powerful office support software for easy data display, editing and export. Anyone managing assets in the field - utility workers, foresters, farmers, resource managers - can use MobileMapper Pro and MobileMapper Office to create or update maps for analysis and storage in a Geographic Information System.

#### CONNECTING FIELD ASSETS WITH GEOGRAPHIC INFORMATION SYSTEMS

MobileMapper Office is a user-friendly office software package linking the MobileMapper Pro and ProMark3 receivers to your GIS. It imports your GIS data into job files to be updated in the field. It can also convert GIS files into background maps for easy navigation and reference using the MobileMapper Pro and ProMark3 receivers. The Feature Library Editor creates lists of features and attributes for describing GIS assets in the field. It can even generate the feature libraries automatically by reading imported .SHP and .MIF files. MobileMapper Office then uploads feature libraries, job files and background maps to the receiver and later downloads and displays new and updated data for quality control and export back to the GIS. And with the post-processed differential correction, you can even get sub-meter accuracy for less than half the cost of other GPS/GIS systems.



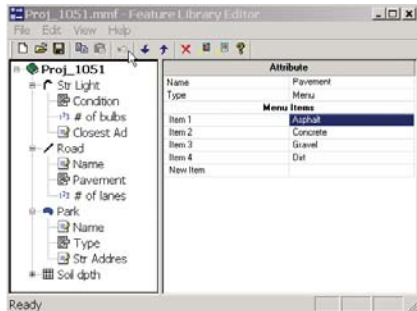
#### THE HIGHEST PERFORMANCE-TO-PRICE RATIO IN THE MARKET

MobileMapper Pro and ProMark3's high performance-to-price ratio and user-friendly features make it easier to deploy and easier to use than any other mobile mapping solutions on the market today. And with its easy-to-learn and operate features, MobileMapper Office is the perfect complement for the person making and maintaining GIS databases in the field.

## TECHNICAL SPECIFICATIONS

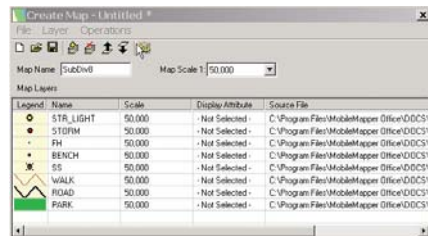
### Feature Library Editor

- Creates and edits lists of GIS features and attributes for describing features in the field
- Supports numeric, text and menu-style attribute values
- Supports creation of MobileMapper Pro grids for collecting data at a pre-defined network of waypoints in the field
- Automatically converts GIS files into feature libraries so you can maintain your database using the same description codes



### Background Map Creation

- Creates background maps from GIS files for display in both MobileMapper Office and the MobileMapper Pro receiver
- Allows the selection of GIS themes/layers and map extents to minimize the size of the maps uploaded to the receiver



### Job Creation and Editing

- Prepares job files for field data collection
- Supports importing of features from GIS files
- Creates job regions to minimize the size of jobs uploaded to the receiver
- Selects feature libraries for inclusion in job files
- Associates background maps with job files

### Differential Correction

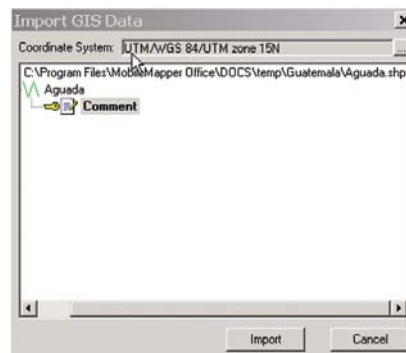
- Provides sub-meter accuracy with baselines up to 50 km
- Processes code and carrier phase data recorded with MobileMapper Pro receiver software
- Compatible with reference station data from Thales survey receivers, Reliance™ and MobileMapper receivers, community base station files, or any source of RINEX code and carrier data
- Supports automatic download of reference data from CORS stations or community base stations

### GIS Data Display and Editing

- Displays job files, imported GIS files, background maps and waypoints
- Displays coordinates and grid lines using a large variety of geodetic systems, grids and datums
- Displays geo-referenced raster images
- Supports user-defined grid systems and datums
- Displays GPS metadata: time spent on point features, length of line features, perimeter and area of area features, # of satellites, min/max PDOP, etc.
- Displays all feature descriptions collected in the field and supports the easy editing of all attribute values
- Zooms in/out
- Zooms to job extent
- Hides/displays feature layers
- Deletes entire features
- Deletes points making up line/area features
- Includes distance measuring tool

### GIS Import/Export

- Supports ESRI shapefile, MapInfo .MIF and Autodesk .DXF import/export and .CSV export
- GIS files can be imported into MobileMapper Pro job files
- Maps in GIS formats can be used as background maps both in MobileMapper Office and in the MobileMapper Pro and ProMark3 receivers



### On-line User Manual

- Technical reference for all MobileMapper Office and receiver features and functions
- Easy-to-use index
- Online Help files

### Language Support

- Chinese
- English
- French
- German
- Russian
- Spanish

### MobileMapper Office Hardware Requirements

- Windows® 2000 and XP only
- Pentium®, 133 MHz or better
- 32 MB RAM min, 64 MB RAM recommended
- 90 MB disk space required for installation

### MobileMapper Pro Application Areas

- **Utilities:** maintaining power/telephone poles, distribution networks and oil/gas pipelines; writing damage assessment reports; documenting service calls
- **Forestry:** mapping facilities, access roads, lease boundaries, fire boundaries, infestations and habitats
- **Corporate and governmental asset management:** managing geographically dispersed assets such as park facilities, fire hydrants, streetlights and irrigation systems
- **Agriculture/ranching:** planning operations; preparing crop reports and chemical application permits; mapping facilities, boundaries and roads
- **Environment and resource management:** writing environmental impact reports; documenting water resources, landfill issues; mapping chemical leaks, wildlife habitats and storm damage
- **Public safety:** mapping fire boundaries, fire access roads, crime locations, disease incidence, storm damage; creating first response plans

### Thales

#### Mobile Mapping Solutions Contact Information

In France +33 2 28 09 38 00 • Fax +33 2 28 09 39 39

In Germany +49 81 6564 7930 • Fax +49 81 6564 7950

In Russia +7 095 956 5400 • Fax +7 095 956 5360

In the Netherlands +31 78 61 57 988 • Fax +31 78 61 52 027

Email [mobilemappingemea@thalesnavigation.com](mailto:mobilemappingemea@thalesnavigation.com)

Web site [www.thalesgroup.com/navigation](http://www.thalesgroup.com/navigation)